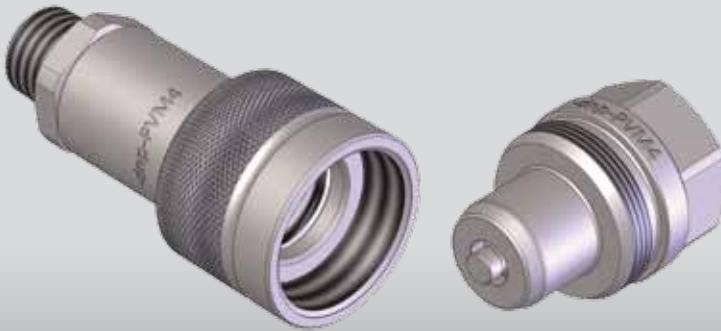


**ISO 14540/700 bar**  
**VALVOLA/ALTA PORTATA**  
**POPPET/HIGH FLOW**  
**VENTIL/HOCHER DURCHFLUSS**  
**CLAPET/HAUT DEBIT**

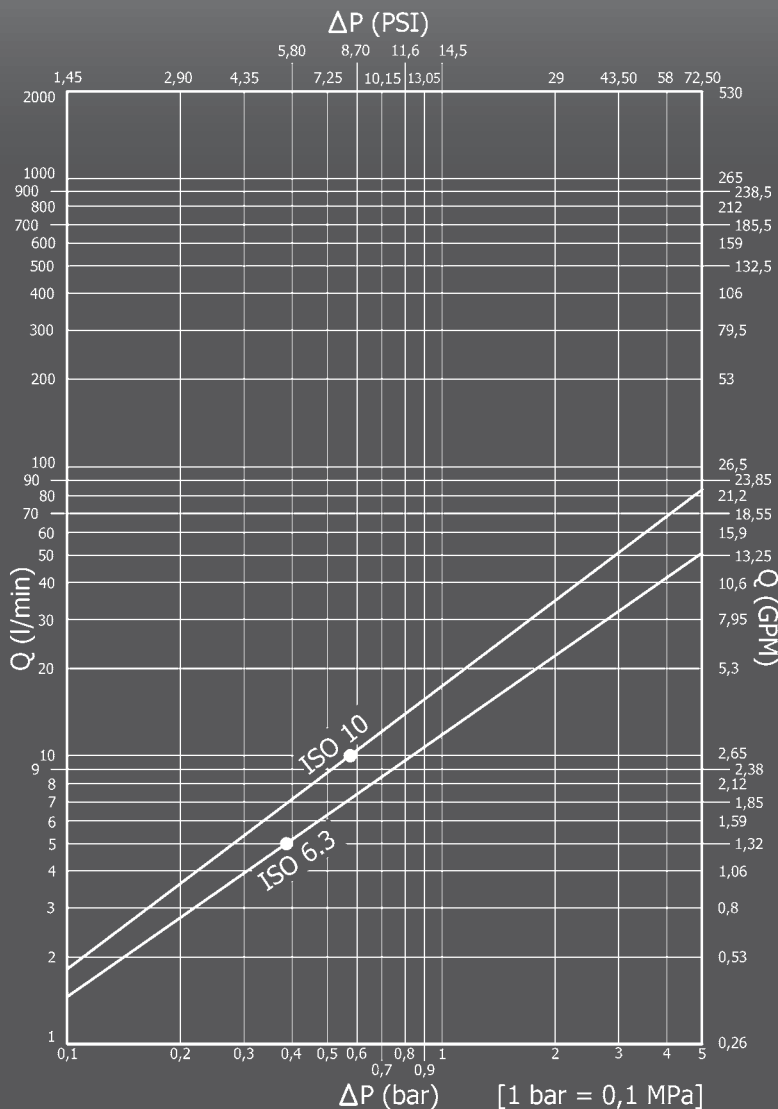


### Caratteristiche tecniche

- Norma: ISO 14540
- Occlusione: valvola
- Aggancio: a vite
- Materiale: acciaio
- Finitura: Zn-Fe (Cr III)
- Filettature: BSP - NPT
- Guarnizioni standard: NBR
- Temperatura d'esercizio: -25 °C +100 °C
- Guarnizioni opzionali: FKM, EPDM o altro
- Pressioni di esercizio: 700 bar
- Connessione in pressione: consentita (lato maschio o lato femmina)
- Massima pressione residua: 100 bar

Nominal size				Max working pressure MPa	Rated flow l/min	Max flow rate l/min	Min burst pressure			Fluid spillage cc
DNP	BG	ISO	mm				Male	Female	Coupled	
06	1	6.3	4	70	5	10	150	200	220	0,2
10	2	10	5,5	70	9	20	150	200	220	0,6

1 MPa = 145,04 psi • 1 l = 0,264 gal



### Technical data

- Standard: ISO 14540
- Occlusion: poppet
- Locking: screw
- Material: steel
- Finishing: Zn-Fe (Cr III)
- Threads: BSP - NPT
- Standard seals: NBR
- Working temperature: -25 °C +100 °C
- Optional seals: FKM, EPDM or more
- Working pressure: 700 bar
- Connection under pressure: allowed (both male or female side)
- Max residual pressure: 100 bar

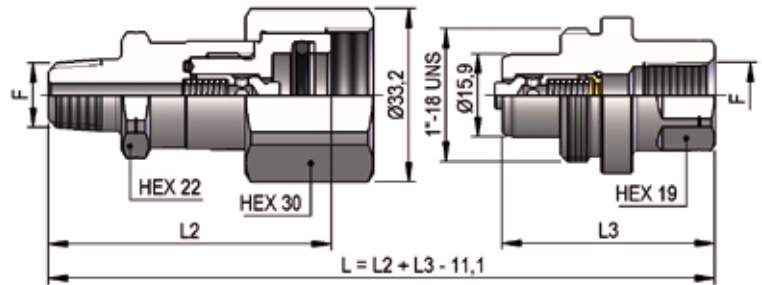
### Technische Merkmale

- Norm: ISO 14540
- Verschluss: ventil
- Kupplung: Schraubweise
- Werkstoff: Stahl
- Ausführung: Zn-Fe (Cr III)
- Gewinde: BSP - NPT
- Standard-Dichtungen: NBR
- Betriebstemperatur: -25 °C +100 °C
- Dichtungen nach Wahl: FKM, EPDM, usw.
- Betriebsdruck: 700 bar
- Kuppeln unter Druck: erlaubt (Steckerseite oder Muffeseite)
- Max. Restdruck: 100 bar

### Caracteristiques techniques

- Norme: ISO 14540
- Obturation: clapet
- Accrochage: a vissé
- Matériel: acier
- Traitement: Zn-Fe (Cr III)
- Taraudage: BSP - NPT
- Joints standard: NBR
- Température de service: -25 °C +100 °C
- Joints facultatifs: FKM, EPDM, ect.
- Pression de service: 700 bar
- Connexion sous pression: possible (côté male ou femelle)
- Pression restante max: 100 bar

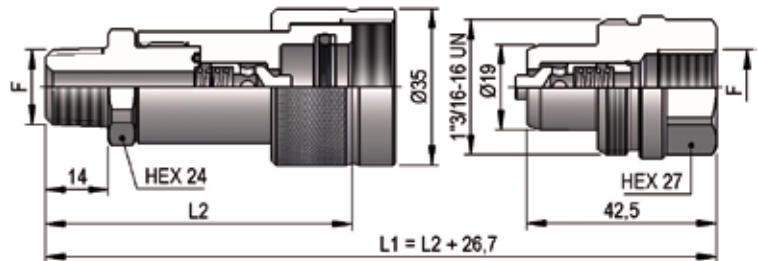
**PVM4 DN06 - BG 1 - ISO 6.3**



THREADS	L2	L3	L4	F	STANDARD	FEMMINA - FEMALE - MUFFE - FEMELLE			MASCHIO - MALE - STECKER - MALE		
						COD. F	Weight (g)	Packaging (pcs.)	COD. M	Weight (g)	Packaging (pcs.)
<b>IG 1</b>	52,5	41		NPT 1/4"	ANSI B1.20.3	PVM4.0606.012	171	100	PVM4.0606.013	97	120
<b>AG 7</b>	53	60	14	NPT 1/4"	ANSI B1.20.3	PVM4.0606.022	162	100	PVM4.0606.023*	115	66
<b>AG 5</b>	51,5	58,5	10,5	BSP 1/4"	JIS B8363	PVM4.0606.212*	120	100	PVM4.0606.213*	110	66

\* REALIZZATI SU RICHIESTA DEL CLIENTE - AVAILABLE ON REQUEST - AUF ANFRAGE LIEFERBAR - DISPONIBLES SUR DEMANDE

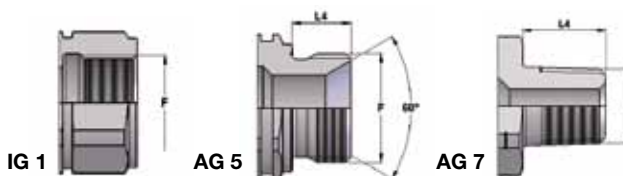
**PVM4 DN10 - BG 2 - ISO 10**



THREADS	L2	F	STANDARD	FEMMINA - FEMALE - MUFFE - FEMELLE			MASCHIO - MALE - STECKER - MALE		
				COD. F	Weight (g)	Packaging (pcs.)	COD. M	Weight (g)	Packaging (pcs.)
<b>IG 1</b>	66,5	BSP 3/8"	DIN 3852-2-X	PVM4.1010.112	249	70	PVM4.1010.003	129	100
	66	NPT 3/8"	ANSI B1.20.3	PVM4.1010.012	250	70	PVM4.1010.013	139	100
<b>AG 7</b>	64,5	NPT 1/4"	ANSI B1.20.3	PVM4.1006.022*	219	70			
	62	NPT 3/8"	ANSI B1.20.3	PVM4.1010.022	249	70			

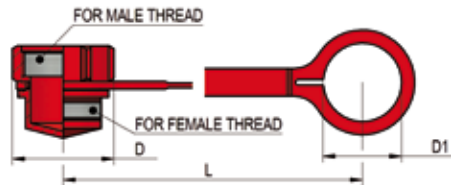
\* REALIZZATI SU RICHIESTA DEL CLIENTE - AVAILABLE ON REQUEST - AUF ANFRAGE LIEFERBAR - DISPONIBLES SUR DEMANDE

THREADS

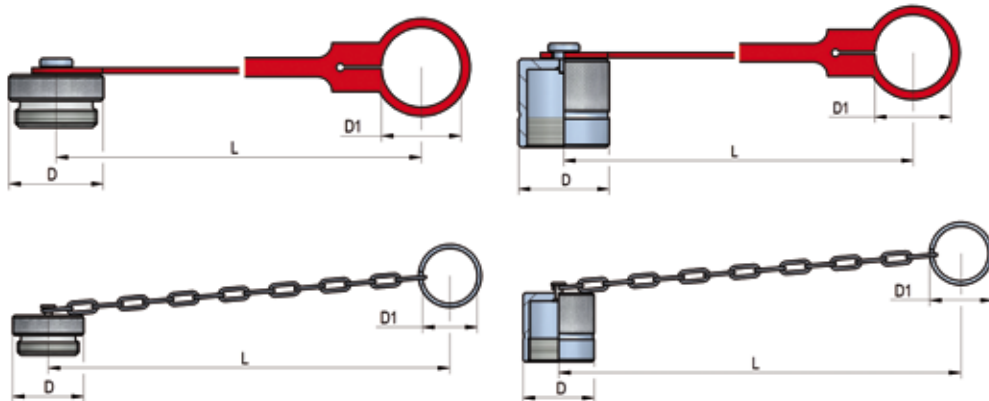


**PLASTIC CAPS**

NOMINAL SIZE		FEMALE DUST PLUG				MALE DUST CAP				COLOUR	MATERIAL		
DNP	BG	ISO	COD. F	Dimensions			Weight	COD. M	Dimensions			Weight	
				D	L	D1	(g)		D	L	D1	(g)	
10	2	10	SPVS.10001	37	108	28,5	16	SPVS.10001	37	108	28,5	16	Polyethylene
10	2	10	SPVS.10041	37	108	28,5	16	SPVS.10041	37	108	28,5	16	Polyethylene


**METAL CAPS**

NOMINAL SIZE		FEMALE DUST PLUG				MALE DUST CAP				MATERIAL			
DNP	BG	ISO	COD. F	Dimensions			Weight	COD. M	Dimensions			Weight	
				D	L	D1	(g)		D	L	D1	(g)	
06	1	6.3	SPVS.06100	35	205	27	79	SPVS.06101	35	205	27	78	Steel with chain
06	1	6.3	SPVS.06102	35	205	27	36	SPVS.06103	35	205	27	34	Aluminum with chain
10	2	10	SPVS.10100 C	35	205	27	97	SPVS.10103 C	35	205	27	109	Steel with chain
10	2	10	SPVS.10102 C	35	205	27	49						Aluminum with chain
10	2	10	SPVS.10100 L	35	135	29,5	114	SPVS.10103 L	35	135	29,5	104	Steel with plastic tongue
10	2	10	SPVS.10102 L	35	135	29,5	44						Aluminum with plastic tongue


**SPARE PARTS**


NOMINAL SIZE		FEMALE GASKET		
DNP	BG	ISO	OR (NBR*)	BK (PTFE)
06	1	6.3	PVS.006.120	PVS.006.130
10	2	10	PDV.010.120	PVS.010.130

\* AL CODICE DELLA GUARNIZIONE IN NBR AGGIUNGERE 'E' PER EPDM O 'V' PER VITON

TO THE NBR GASKET CODE ADD 'E' FOR EPDM OR 'V' FOR VITON

ZU DER ARTIKELNR. DER NBR DICHTUNG GEBEN SIE 'E' FUER EPDM ODER 'V' FUER VITON AN

AU CODE DU JOINT EN NBR JOINDRE 'E' POUR EPDM OU 'V' POUR VITON